

Technical Specification:

LED Tube Lights T8

Nom. Tube Length (mm)		450	600	900	1200	1500	1800
Dimensions	A	451.6	589.8	894.6	1199.4	1500	1763.8
	B	451.6	604	908.8	1213.6	1514.2	1778
	C	26					
Power Consumption		8W	9.5W	13.5W	14.5W	25W	30W
Light intensity (Lumens)		800 >	1.232 >	1.787 >	1.951 >	3.257 >	3.582 >
Weight		150g	182g	255g	328g	399g	462g
Connector		2 x G13					
Connector Rotation		± 90°					
Colour Render Index		≥ 80					
Beam angle		180°					
LED Life		65.000 hrs (time to 70% of the initial light output)					
IP Rating		IP40					
Operating temp		-25°C to + 55°C					
MTBF MIL-HDBK-217F (40°C)(hrs)		100.000h					
Switch cycles		100.000 (UIC555)					

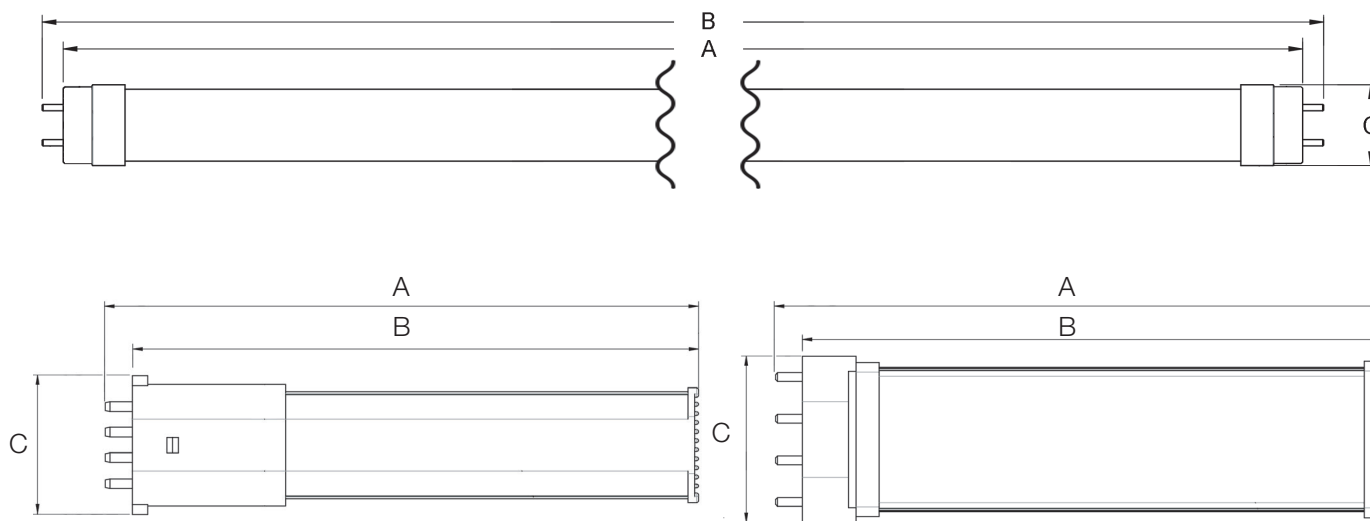
LED Tube Lights T5

Nom. Tube Length (mm)		563	863	1163	1463
Dimensions	A	549	849	1149	1449
	B	563	863	1163	1463
	C	16 (end cap) 23 (body)			
Power Consumption		9W	12W	15W	23W
Light intensity (Lumens)		1170	1560	1950	2290
Weight		205g	235g	390g	430g
Connector		2 x G5.3			
Connector Rotation		± 90°			
Colour Render Index		≥ 80			
Beam angle		180°			
LED Life		65.000 hrs (time to 70% of the initial light output)			
IP Rating		IP40			
Operating temp		-25°C to + 55°C			
MTBF MIL-HDBK-217F (40°C)(hrs)		100.000h			
Switch cycles		100.000 (UIC555)			

2G7 en 2G11 Stick lights

Nom. Tube Length (mm)		LED152*2G7**		LED152*2G7**		LED220**		LED322**		LED416**	
Dimensions	A	152.67		163.51		227		329		423	
	B	36		43		43		43		43	
	C	145.87		156.71		220		322		416	
Nominal Voltage		24VDC		110VDC		24VDC		110VDC		24VDC	
Light intensity (Lumens)		400		430		1200		1320		1760	
Power Consumption		6W		10W		10W		16W		18W	
Colour Render Index		≥ 80									
Beam angle		180°									
LED Life		65.000 hrs (time to 70% of the initial light output)									
IP Rating		IP40									
Operating temp		-25°C to + 55°C									
MTBF MIL-HDBK-217F (40°C)(hrs)		100.000h									
Switch cycles		100.000 (UIC555)									

Dimensions:



LED LIGHTING

INTERIOR LIGHTING FOR PUBLIC TRANSPORT



5 Year
WARRANTY



SCS Industrie-componenten B.V.
Cobaltstraat 19
2716 CG Zoetermeer
The Netherlands

Phone : +31 79 361 1171
Email : sales@scs.nl
Web : www.scs.nl

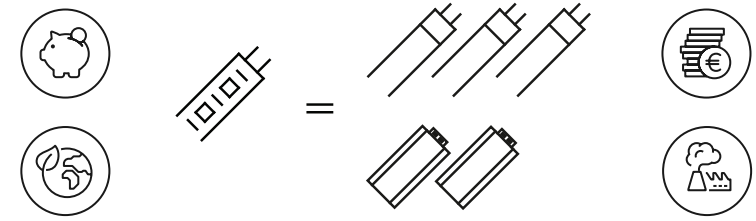




Rail Compliant LED Lighting

SCS offers a wide range of fully rail compliant LED interior lights for retrofit in new and existing fittings. All of our products are developed to meet railway rolling stock standards. They offer all the benefits of LED technology, long life and low power consumption, therefore reducing life cycle costs and your environmental impact.

LED vs Fluorescent



BENEFITS

- Lifetime maintenance free
- Direct to power source, NO inverter
- High reliability LED Technology
- 50% Energy saving
- Less Chemical waste

FEATURES

- Lifetime maintenance free
- LED Life 65.000h @min 70%
- Compliant with low voltage directive
- High reliability LED Technology
- Energy saving - Low Power Consumption
- Quality Technical Support
- 5 years warranty

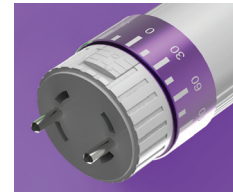
SAFETY AND STANDARDS

Craig & Derricott LED tubes are fully designed, tested and **certified** to meet Rolling Stock standards

Standards

- **EN50155** Rolling stock electronic equipment
- **EN50121-3-2** Railway Electro Magnetic Compatibility
- **EN61373** Railway application Shock & Vibration
- **EN45545** Fireprotection (V0 & LSZH compliance)
- **EN600081** Double capped tubes dimensional compliant
- **EN605529** IP40 Ingress protection

T8 LED TUBES



Partno.	Nom Length	Weight	Nom. Voltage	Powerconsumption	Color Temp. (±5%)
LED450/24/T8/**/2	450mm	150g	24VDC (16.8V - 30V)	8W	** NW Natural White 4000K
LED600/24/T8/**/2	600mm	182g		9.5W	
LED900/24/T8/**/2	900mm	255g		13.5W	
LED1200/24/T8/**/2	1200mm	328g		14.5W	
LED1500/24/T8/**/2	1500mm	399g		25W	
LED1800/24/T8/**/2	1800mm	462g		30W	
LED450/110/T8/**/2	450mm	150g	110VDC (36.4V - 137.5V)	8W	** PW Pure White 5000K
LED600/110/T8/**/2	600mm	196g		9.5W	
LED900/110/T8/**/2	900mm	269g		13.5W	
LED1200/110/T8/**/2	1200mm	340g		14.5W	
LED1500/110/T8/**/2	1500mm	407g		25W	
LED1800/110/T8/**/2	1800mm	476g		30W	
LED450/230/T8/**/2	450mm	150g	230VAC (161V - 253V)	8W	** CW Cool White 6000K
LED600/230/T8/**/2	600mm	196g		9.5W	
LED900/230/T8/**/2	900mm	269g		13.5W	
LED1200/230/T8/**/2	1200mm	340g		14.5W	
LED1500/230/T8/**/2	1500mm	407g		25W	
LED1800/230/T8/**/2	1800mm	476g		30W	

T5 LED TUBES



Partno.	Nom Length	Nom. Voltage	Weight	Color Temp. (±5%)
LED563/24/T5/**/2	563mm	24VDC (16.8V - 30V)	205g	** NW Natural White 4000K
LED863/24/T5/**/2	863mm		235g	
LED1163/24/T5/**/2	1163mm		390g	
LED1463/24/T5/**/2	1463mm	110VDC (36.4V - 65V)	430g	** PW Pure White 5000K
LED563/110/T5/**/2	563mm		205g	
LED863/110/T5/**/2	863mm		235g	
LED1163/110/T5/**/2	1163mm	230VAC (161V - 253V)	390g	** CW Cool White 6000K
LED1463/110/T5/**/2	1463mm		430g	
LED563/230/T5/**/2	563mm		205g	
LED863/230/T5/**/2	863mm	230VAC (161V - 253V)	235g	** CW Cool White 6000K
LED1163/230/T5/**/2	1163mm		390g	
LED1463/230/T5/**/2	1463mm		430g	

2G7 & 2G11 LED STICK LIGHTS

Partno.	Nom Length	Fitting	Nom. Voltage	Weight	Color Temp. (±5%)
LED152/24/2G7/**/2	152mm	2G7	24VDC	49g	** NW Natural White 4000K
LED152/24/2G7/**/2			110VDC	54.9g	
LED152/24/2G11/**/2	152mm	2G11	24VDC	83.5g	** PW Pure White 5000K
LED152/110/2G11/**/2			110VDC	90g	
LED220/24/2G11/**	220mm	2G11	24VDC	101.7g	** CW Cool White 6000K
LED220/110/2G11/**			110VDC	101.7g	
LED322/24/2G11/**	322mm	2G11	24VDC	165g	** CW Cool White 6000K
LED416/24/2G11/**	416mm			214g	

Product Material:

Insulation and Resistance to Flame and Ignition All insulation parts are manufactured from quality engineering plastics, all materials that secure live parts in position are ball pressure tested, glow wire tested to 960°C and flame retardant.

Component Materials

Metal Extrusion	Aluminium
Tube Endcaps	Polycarbonate (V-0) LOI 35%
Frosted Lens Diffuser	Polycarbonate (V-0) LOI 46%

Construction Support Structure The use of an aluminium case and substrate for the PCB ensures excellent even heat dissipation within the tube and aids structural stiffness.

INSTALLATION:

